

# HEATLOK<sup>®</sup> | ABS

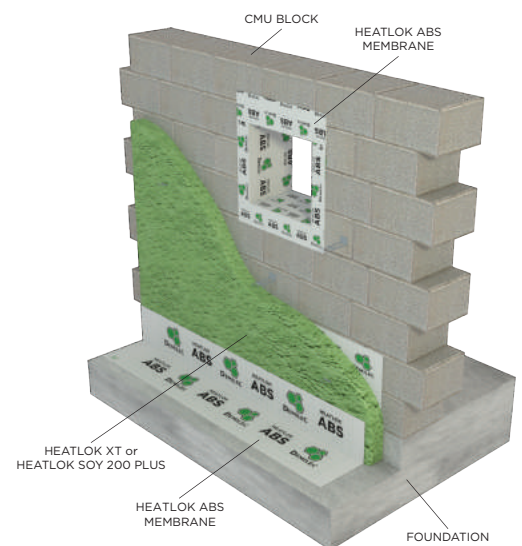
AIR BARRIER SYSTEM



## STOP AIR INTRUSION AT CRITICAL TRANSITIONS

Heatlok ABS is a self-adhered air/vapor barrier membrane for walls composed of SBS modified bitumen and a tri-laminate woven polyethylene facer. It is also used as masonry and through-wall flashing membrane as well as waterproofing membrane at openings and transitions.

- **Excellent adhesion to various substrates**
- **Designed for polyurethane spray foam insulation**
- **Easy, fast, and economical to install**
- **Self-sealing membrane ensuring continuous waterproofing**



**CONTACT US TO LEARN MORE!**

©2018 Demilec • 817.640.4900 • [www.demilec.com](http://www.demilec.com)



# ONE SOURCE FOR A COMPLETE AIR BARRIER SYSTEM

For over 20 years, Demilec has supplied Heatlok spray foam insulation to millions of square feet of exterior wall applications throughout North America. Now we deliver the entire system.

Building professionals have identified a “single source of supply” as the one thing missing in the air barrier industry today. Without the systems approach to material testing and installation, architects and general contractors are left with conflicting information, details that can’t be built, and no single authority when it comes to membranes and spray foam insulation.

Demilec provides Heatlok ABS membranes that perfectly match with multiple Heatlok spray foam insulations to give you a single source for insulation and air barrier materials.

**Demilec Heatlok ABS has been fully tested by independent laboratories and exceeds the performance requirements of:**

- ⊕ ABAA (Air Barrier Association of America)
- ⊕ ASHRAE 90.1
- ⊕ CAN/ULC S705.1
- ⊕ Installation Standards - CAN/ULC S705.2
- ⊕ Air Barrier Assemblies - CAN/ULC S742
- ⊕ The Canadian Government Standards for Insulation Material



**FIRE  
RESISTANT**



**WATER  
RESISTANT**



**AIR  
IMPERMEABLE**

## MEMBRANE SPECS

<b>Length</b>	75 ft. (22.9 m)
<b>Width</b>	6 inches 9 inches 12 inches 18 inches 36 inches
<b>Coverage*</b>	225 sq. ft. (20.9 m <sup>2</sup> )
<b>Thickness</b>	40 mils (1.0 mm)
<b>Roll Weight</b>	46 lbs. (20.9 kg)

## MEMBRANE CONSTRUCTION

<b>Surface</b>	Tri-laminate woven polyethylene
<b>Underface</b>	Silicone release paper

## APPLICATION

<b>Application</b>	Self-adhered (use Heatlok ABS Primer for better adherence)
<b>Application Temp Range</b>	14 - 122°F (-10 - 50°C)
<b>Service Temp Range</b>	-49 - 194°F (-45 - 90°C)
<b>Substrate</b>	Vertical walls of masonry, concrete, or gypsum sheathing
<b>Uses</b>	Air, vapor, and rain barrier as a base for exterior insulation and finish systems (EIFS). Transition membrane at doors, windows, HVAC ductwork, pipes, penetrations, flashing, etc.

\*Coverage rate as reported assumes installation using side and end lap recommendations.

# EASY INSTALLATION

---



1

## PRIME SUBSTRATE

The substrate must be clean and dry before the membrane can be installed. Clean the substrate and then prime it with Heatlok ABS Primer to ensure better adhesion.



2

## INSTALL TRANSITION MEMBRANE

Apply the membrane by peeling back the release film on the underside of the sheet and apply with hard pressure. Once the sheet is in place, roll the entire sheet with a weighted roller.



3

## INSULATE WITH SPRAY FOAM

Demilec provides multiple closed cell spray foams that are compatible with the Heatlok ABS Membrane; Heatlok HFO Pro, Heatlok HFO High Lift, Heatlok XT, and Heatlok Soy 200 Plus.

# COMPATIBLE SPRAY FOAMS

---

## HEATLOK® HFO PRO

Heatlok HFO Pro, at 7.4/inch, creates an air barrier, water barrier, vapor retarder and thermal insulation at 1 inch, ideal for commercial buildings. Designed on the molecular level to specifically address the challenges of today's building envelope, Heatlok HFO Pro spray foam is certified by the Air Barrier Association of America (ABAA) for adhesion to most air barrier materials and achieves an R-11 to exceed ASHRAE 90.1 continuous insulation requirements at 1.5 inches. In addition, Heatlok HFO Pro spray foam provides a vapor retarder (less than 1 perm) at 1-inch thickness, a full 35 percent thinner than current Demilec materials, providing moisture vapor control within the exterior cavity.

## HEATLOK® HFO HIGH LIFT

Heatlok HFO High Lift is Demilec's first product to leverage Honeywell's Solstice® Liquid Blowing Agent technology, which has a GWP of 1, 99.9% lower than traditional blowing agents. Heatlok HFO High Lift combines an R-value of 7.5 with a 6.5" lift to achieve an R-49 in a single pass. Spray IRC Ceiling insulation code in less time than ever before!

## HEATLOK® XT

Heatlok XT is a closed cell spray foam insulation for commercial and residential construction that creates a specially engineered building envelope, which provides better thermal resistance, an excellent air barrier, and a recognized vapor retarder. Heatlok XT incorporates more than 20% recycled plastic and renewable oils to create an easier to spray, high yield product.

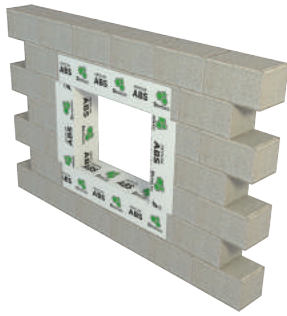
## HEATLOK® SOY 200 PLUS

Heatlok 200 Plus' unique formula incorporates 14% of recycled plastic and renewable oils to create a high-performing, closed-cell spray foam insulation. Heatlok Soy 200 Plus has a R-value of 7.4 at 1 inch, a density of 2.1 lb./ft<sup>3</sup>, and combines multiple layers into a single application, saving both time and money in construction costs.

# MULTIPLE APPLICATIONS

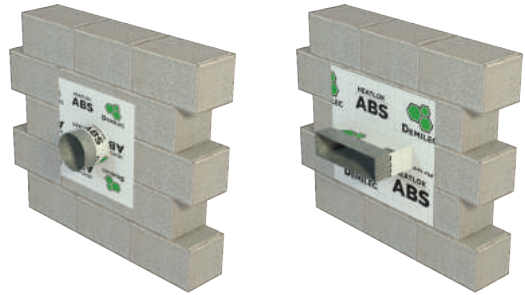
## WINDOW APPLICATIONS

Window frames are a major source of air infiltration. Stop this air and vapor flow where all of the materials come together to form a window. Windows become an opportunity, not a challenge.



## HVAC PENETRATIONS

HVAC is a must to maintain air flow, but the penetrations left behind can create challenges. Heatlok ABS solves this challenge with a flexible membrane that will form to multiple types of penetrations.



## BRICK LEDGES

Move water away from the facade of the building by utilizing Heatlok ABS Membrane as a flashing on brick ledges.



## CORNERS & JOINTS

Easily seal corners, expansion joints, and control joints with Demilec's Heatlok ABS Membrane.



SOLD BY:



Go to [www.Demilec.com](http://www.Demilec.com) or  
download the Demilec app

